



**PRODUCT
CATALOG**



**MACHINES FOR
WOOD
& PALLET
INDUSTRY**

SBM



BAND SAW SHARPENING MACHINE ŞERİT TESTERE BİLEME MAKİNESİ



Sharpening Machine with Lubrication:

Grinding angle: 18°-30°

Tooth pitch: 12-24mm

Saw blade width: 5-120mm

Grinding profile: PV (adjustable)

Automatic grinding

Lubrication: water/oil mix.

Weight: 310kg



Sulu Bileme Makinesi:

Taşlama açısı: 18°-30°

Diş arası: 12-24mm

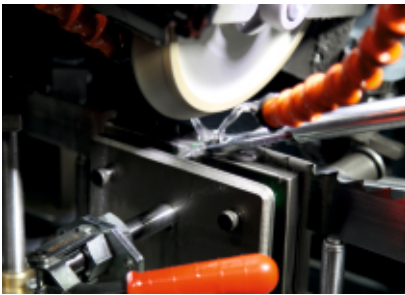
Testere genişliği: 5-120mm

Taşlama profili: PV (ayarlı)

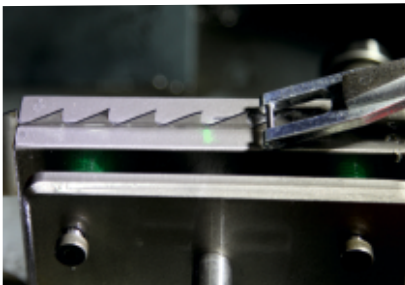
Otomatik taşlama

Yağlama: su / yağ karışımı

Ağırlık: 310kg



Ø200mm special grinding stone
Ø200mm özel bileme taşı



Tooth pushing / Diş itme



Specifications / Özellikler:

Bandsaw

Şerit testere:

Length	Uzunluğu	: Max. 9500mm (adjustable)
Width	Genişliği	: Min. 5mm - Max. 120mm

Tooth

Diş:

Tooth depth	Diş derinliği	: Max. 9,5mm
Tooth tip distance	Diş arası	: 12-16mm / 18-24mm

Speed

Hız:

Sharpening	Bileme hızı (Hız ayar sistemi)	: 60 Teeths/min (speed adjustment system)
------------	-----------------------------------	--

Power

Güç:

Total Power	Toplam güç	: 0,80 kW
Power supply	Güç kaynağı	: 380V/50Hz, 3Ph